

Photo © Seoul Metropolitan Government



Innovative toolkit for local climate action: ICLEI's support package

Maryke van Staden, Manager, Low Carbon City, ICLEI



Clear direction

- The **low emission development pathway** – part of the 5 ICLEI pathways - curbs climate change, creates new economic opportunities and improves the health of human and natural systems.

LOW EMISSION
DEVELOPMENT



RESILIENT
DEVELOPMENT



CIRCULAR
DEVELOPMENT



EQUITABLE AND
PEOPLE-CENTERED
DEVELOPMENT



NATURE-BASED
DEVELOPMENT

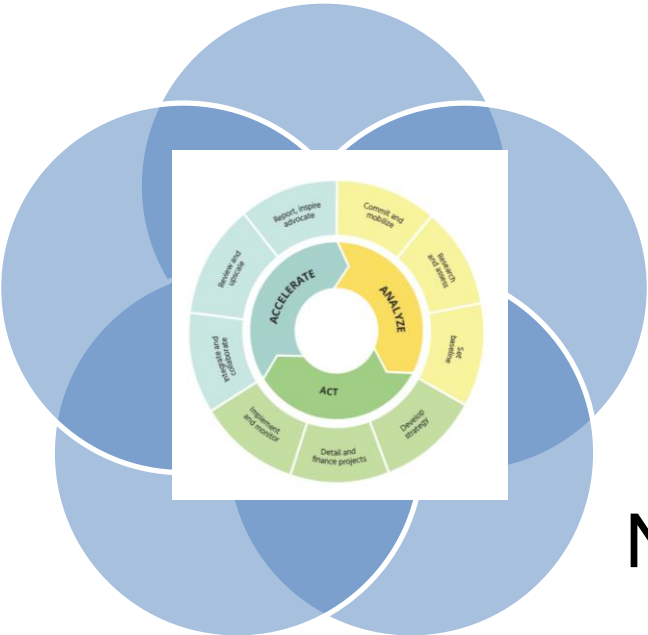


Enabling, integrated approach

Policy and
technical
assistance

Enabling
access to
finance

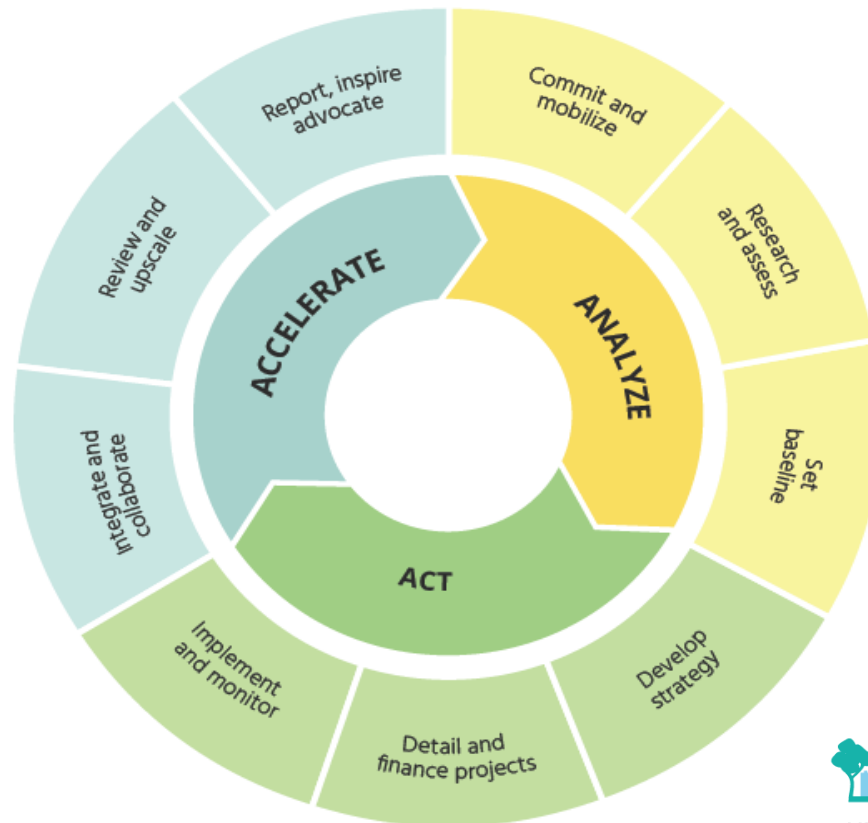
Platforms,
processes,
standards



Climate
advocacy

Networking
and
exchange

GreenClimateCities program



The GCC is used
in projects, such as

Integrated MRV

– track, connect and correct

- Embedded in the GCC program to track progress, connect to other levels of government, analyze and correct to get back on track to achieve targets.
- Part of multilevel governance - critical to accelerate climate action and achieve Paris Agreement goals.



INTEGRATED MEASURING, REPORTING AND VERIFYING (MRV)

RECOGNITION

The carbona Climate Registry is a reporting platform that recognizes new entities and places them within a family tree with cities and local governments nested into regions or subnational states, which are subsequently organized under the national umbrella.

CONNECTION

Each reporting entity can connect with its "family members". This national family tree builds an organized interconnected team and a holistic picture of climate change mitigation and adaptation efforts within a region, a country or globally.

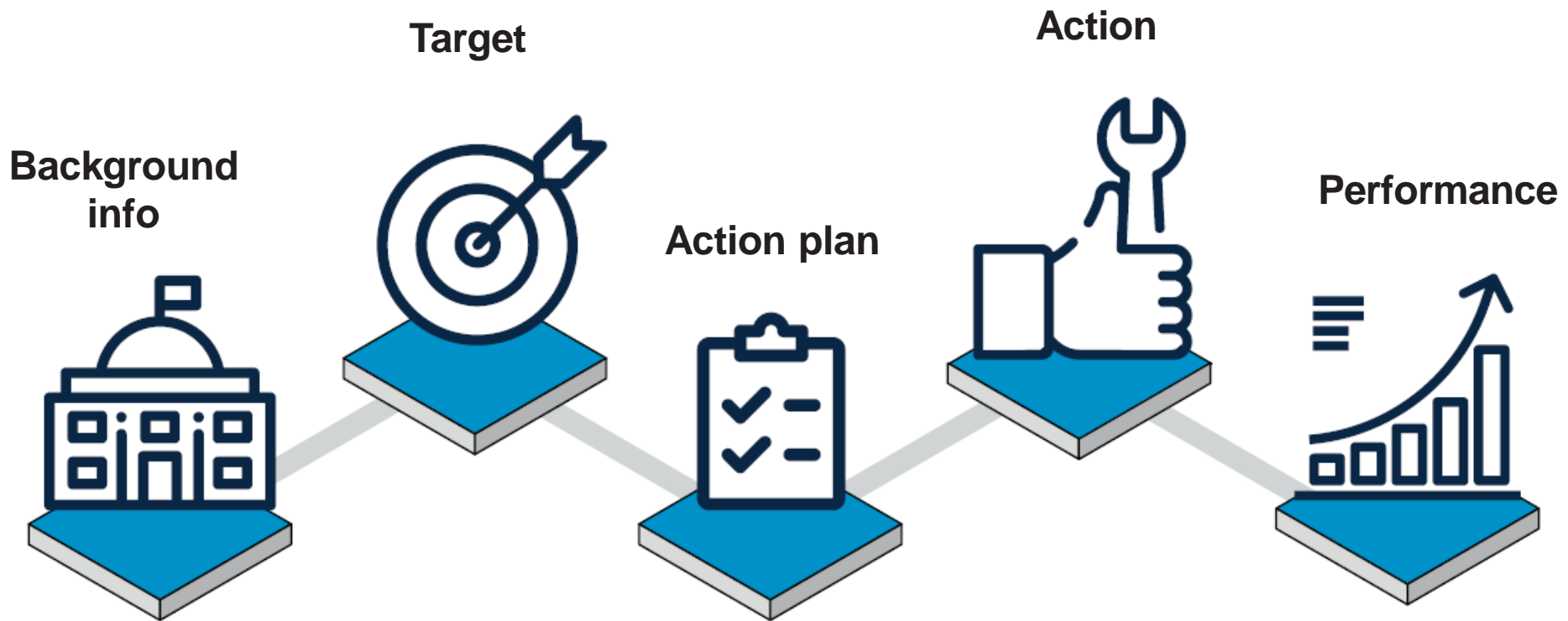
COMPARISON

Reporting entities can compare their own performance and those of their family members as it relates to the whole. Higher levels of government can identify the strengths and weaknesses of subjacent reporting entities and give assistance or support accordingly.

COORDINATION

Different reporting entities and levels of government can coordinate action planning and implementation through integrated MRV. National climate action plans can be tailored to address key emissions sources and coordinated adaptation action through vertically linked actions and targets.

Report, analyze, accelerate



carbonn[®] Climate Registry - global reporting platform for cities, towns and regions tackling climate change – created to support transparency, accountability and credibility.

Coherent messaging to the UNFCCC and nations on progress and needs

Comprehensive support package



GHG Inventories / Climate Risk & Vulnerability Assessments



Energy
Transport
Buildings
Waste
Water
Land Use
....

Access to Expertize and Analysis



Access to Solutions and Examples



Access to Finance

TAP Transformative Actions Program

Connecting to initiatives and partnerships



Contact us

Bonn Center for Local Climate Action and Reporting (carbonn Center)
ICLEI World Secretariat
Bonn, Germany

E-mail:

carbonn@iclei.org

Websites:

www.iclei.org

www.carbonn.org

www.solutions-gateway.org



Thank you!

