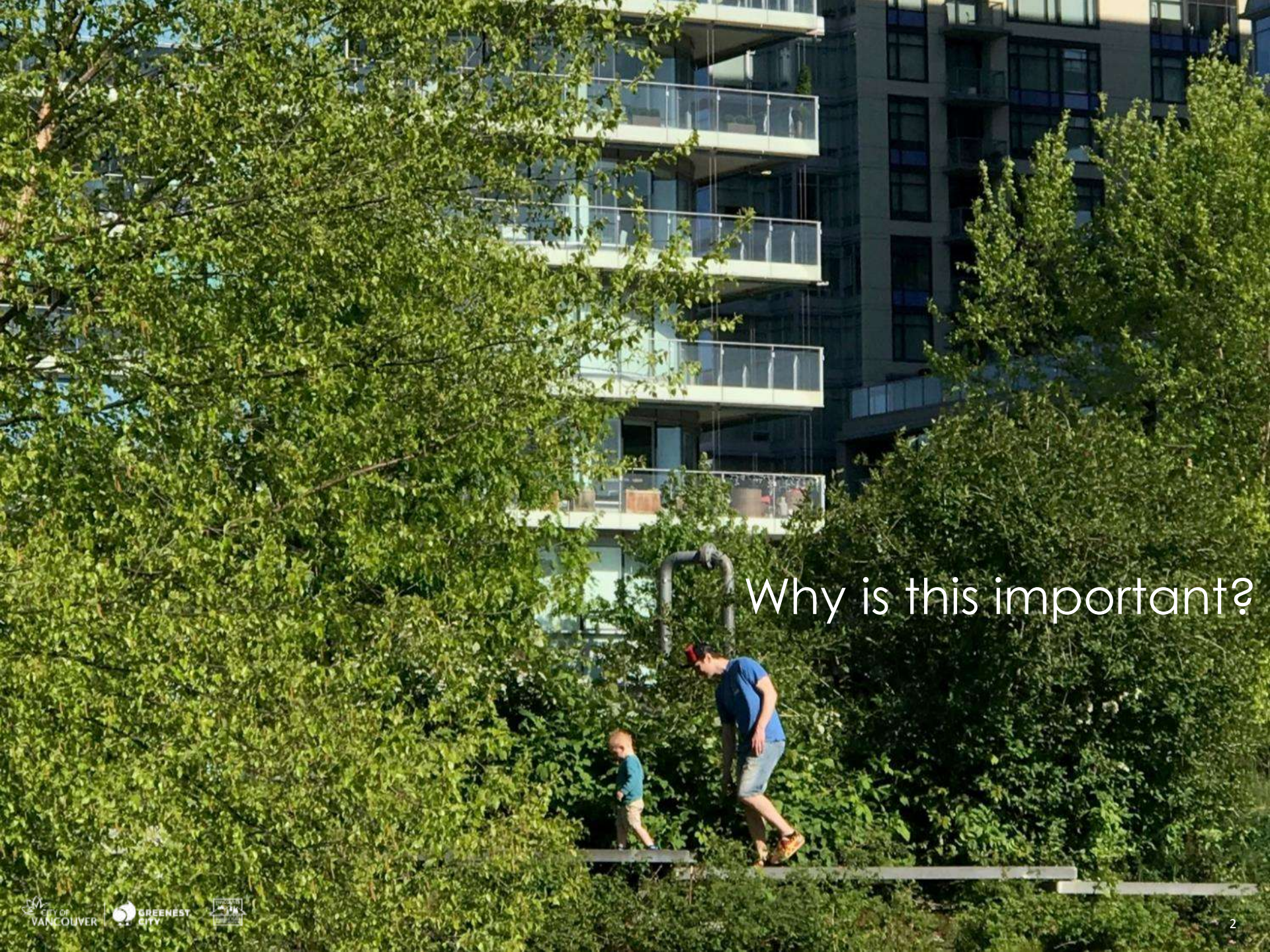


VANCOUVER'S BIODIVERSITY STRATEGY



Doug Smith
June 21, 2018



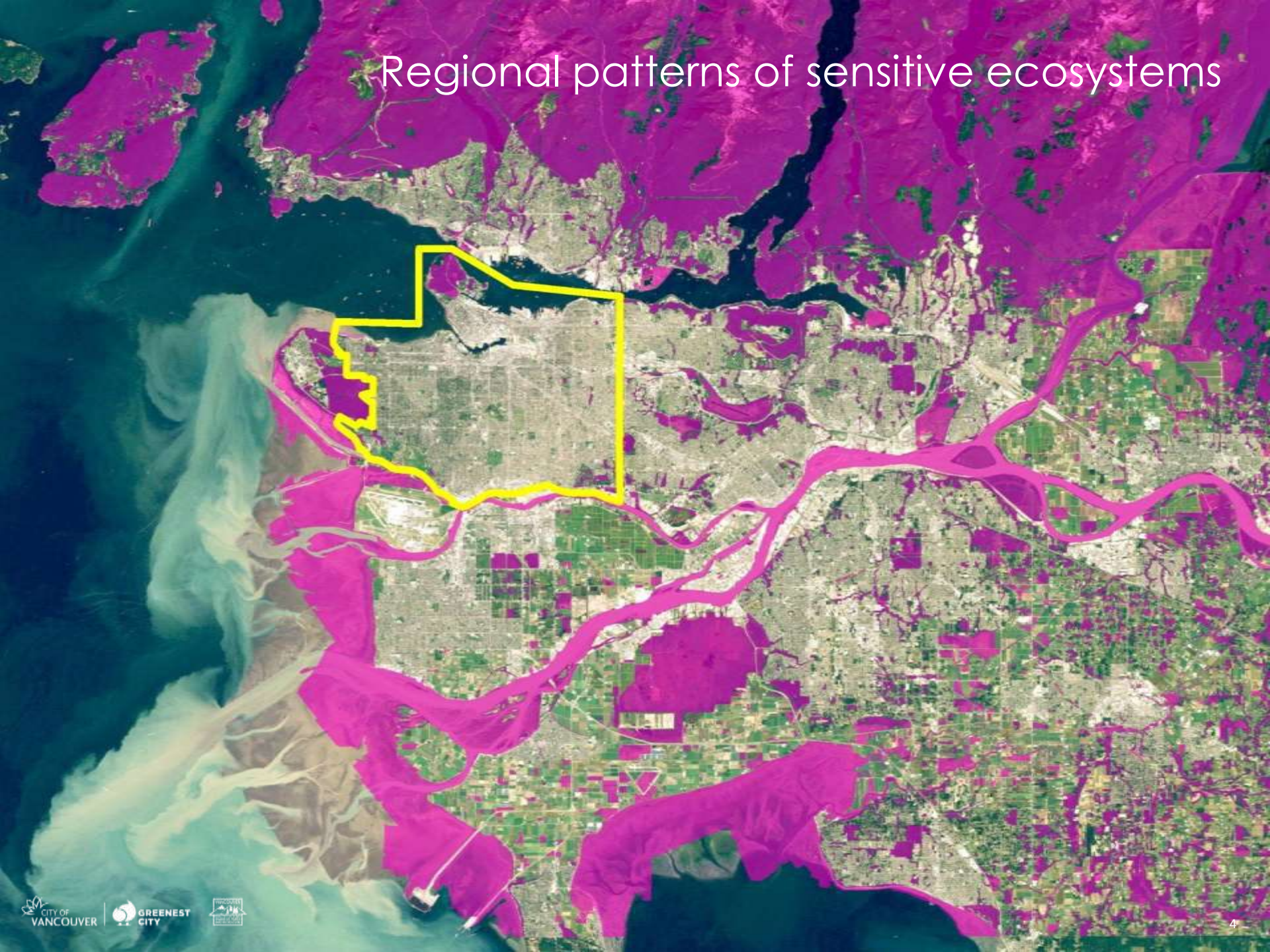


Why is this important?

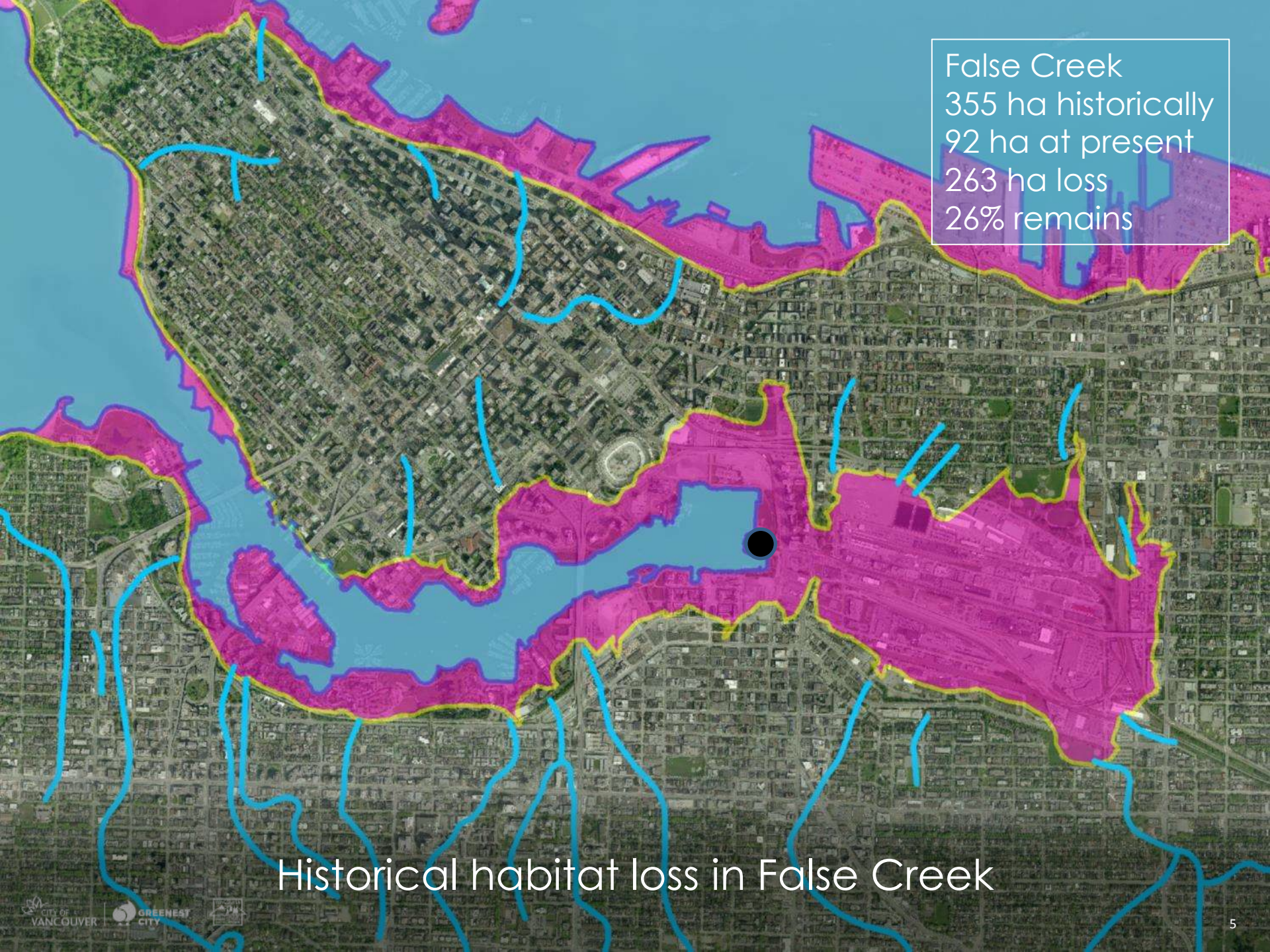
What's unique about biodiversity in Vancouver?

1. Historical development patterns and habitat and species loss
2. Emphasis on parks as the core of the Ecological Network
3. Strong public interest in wildlife and biodiversity (biophilia)
4. Political support and ambition (GCAP)
5. Natural recovery and recolonization (rewilding)
6. Successful habitat restoration projects

Regional patterns of sensitive ecosystems

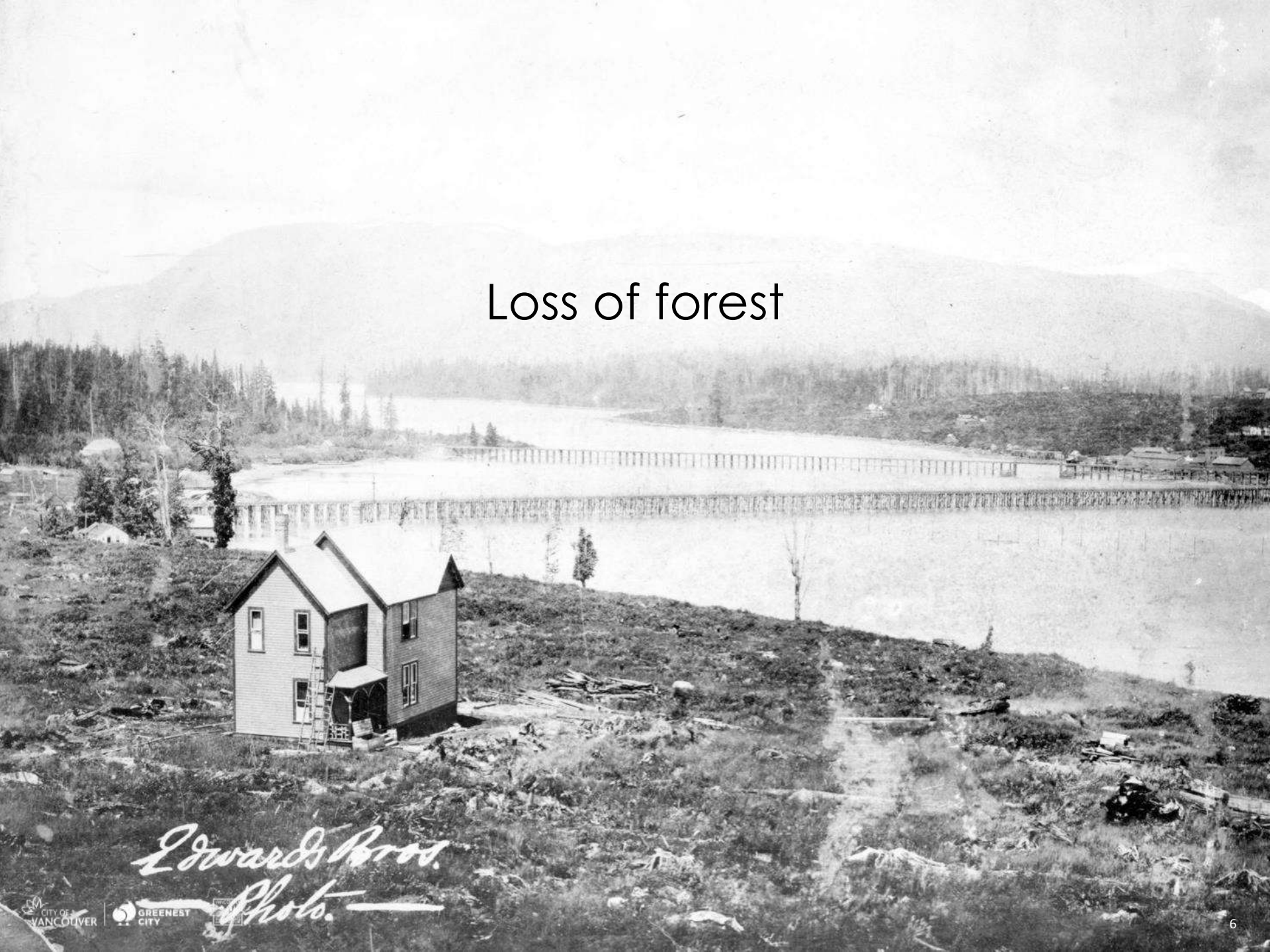


False Creek
355 ha historically
92 ha at present
263 ha loss
26% remains



Historical habitat loss in False Creek

Loss of forest



Edwards Bros.
Photo.



Loss of many wildlife species

The slain Cougar & his Hunters.
shot in Stanley Park Oct 26th 11



Grey whale in English Bay



Tweets
341

Following
46

Followers
540

Likes
96

OlympicVillageBeaver

@VancouverBeaver

📍 False Creek, Vancouver

📅 Joined December 2015

🖼️ 155 Photos and videos



Tweets

Tweets & replies

Media



OlympicVillageBeaver @VancouverBeaver · Feb 6
Any idea why my Alberta cousins aren't answering my calls @ab_ep?

💬 ↻ 2 ❤️ 8

🔄 OlympicVillageBeaver Retweeted



Tresa Horney @tresahorney · Jan 29
They've done some night work. @VancouverBeaver





Chum salmon spawning in Still Creek

Overwintering seaducks in English Bay



Vegetation in the City of Vancouver

Vegetation Classes


- Unvegetated Open Water
- Sparsely Vegetated
- Herbaceous (Grass)
- Shrubland
- Forest



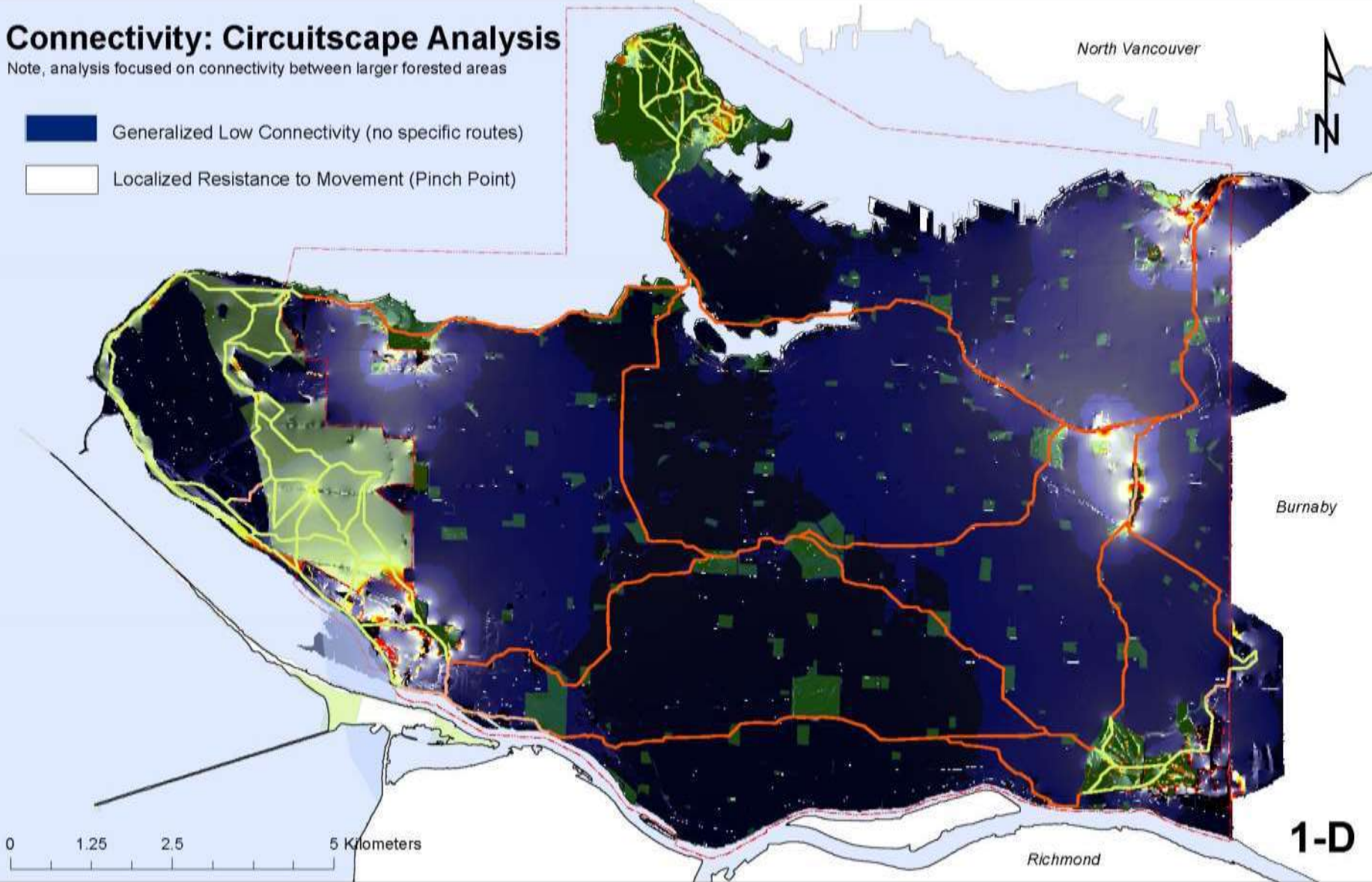
Mapping natural areas based on vegetation

Connectivity: Circuitscape Analysis

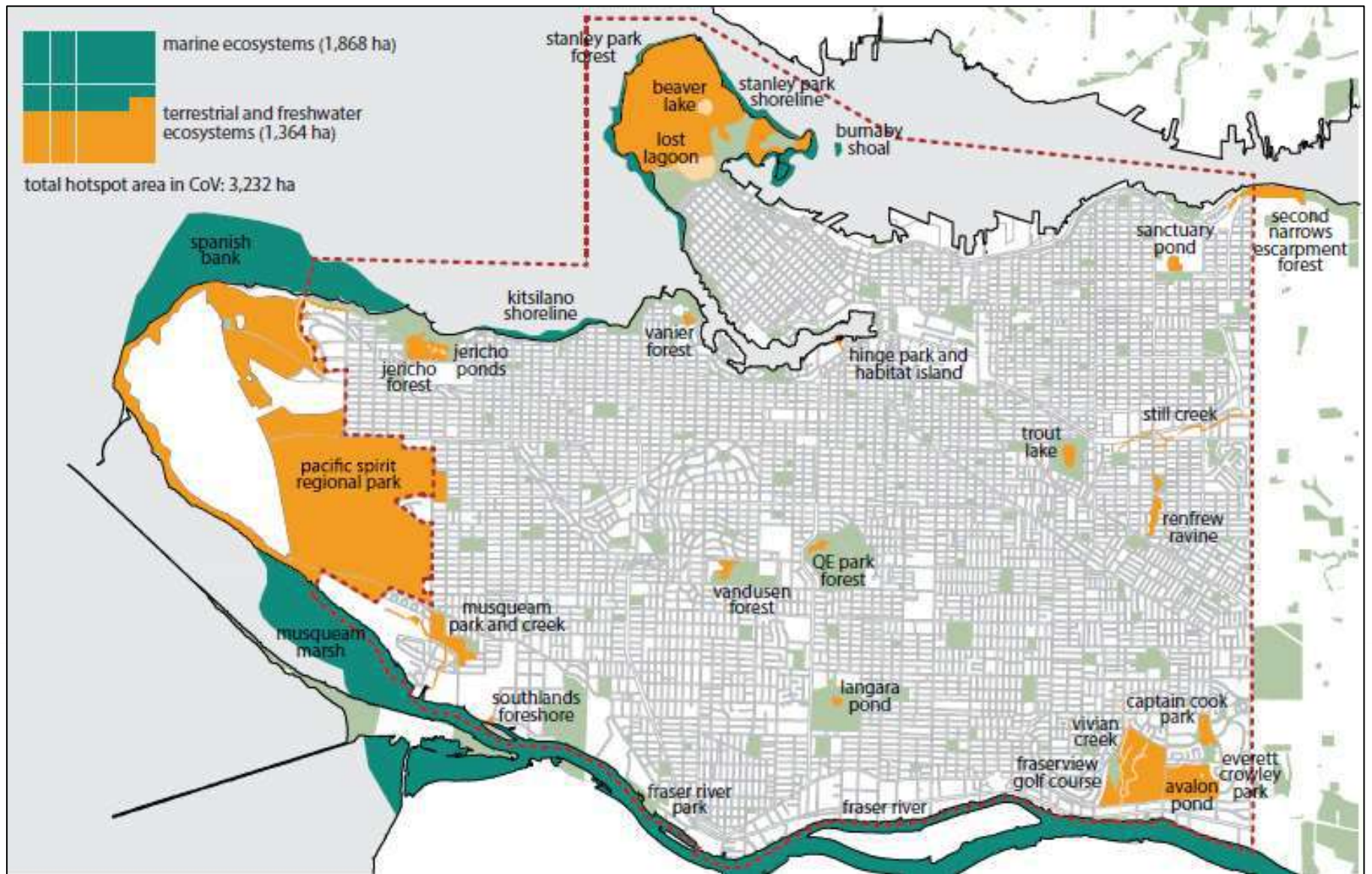
Note, analysis focused on connectivity between larger forested areas

 Generalized Low Connectivity (no specific routes)

 Localized Resistance to Movement (Pinch Point)



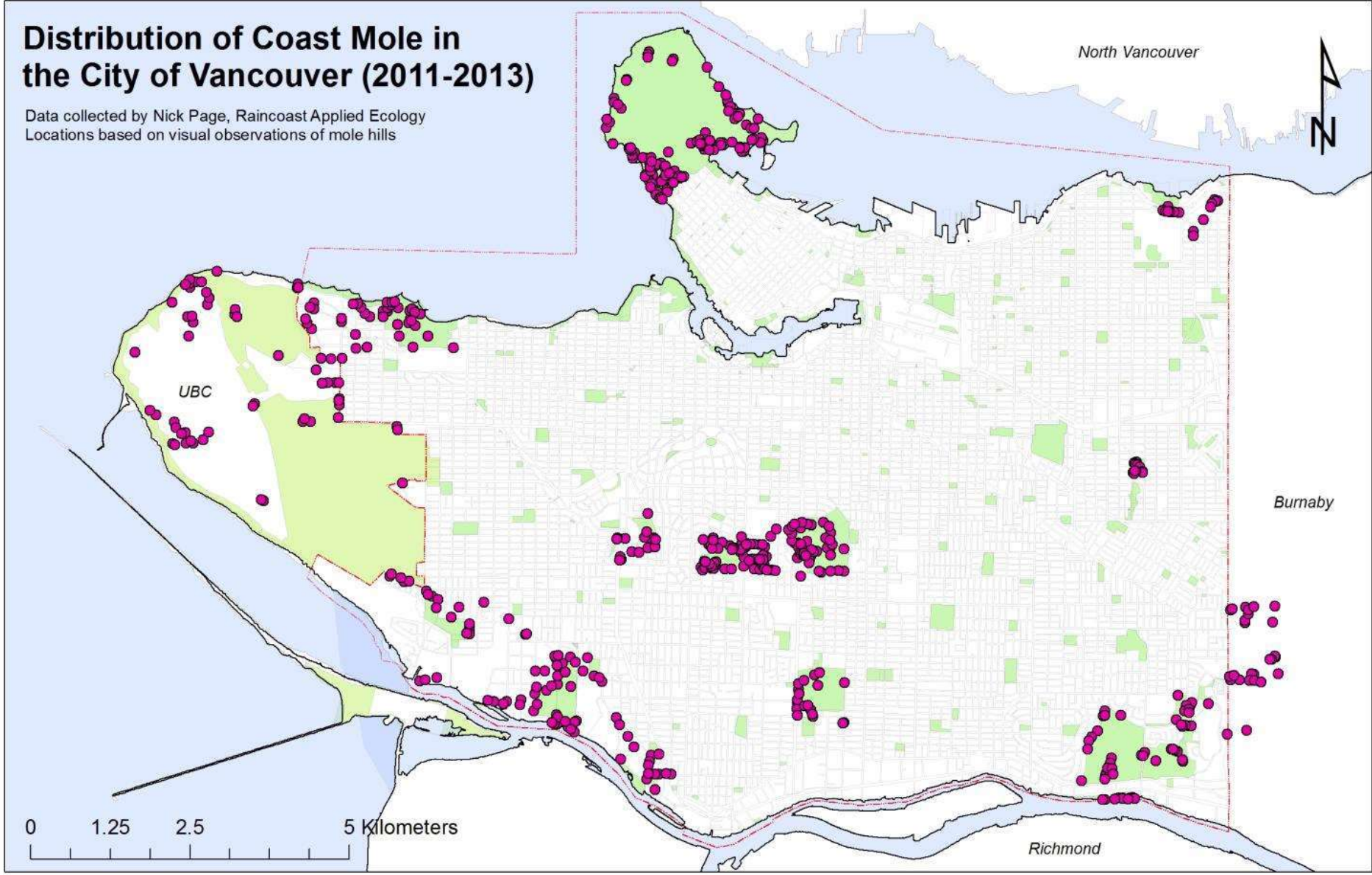
Landscape connectivity



Biodiversity hotspots

Distribution of Coast Mole in the City of Vancouver (2011-2013)

Data collected by Nick Page, Raincoast Applied Ecology
Locations based on visual observations of mole hills



Patterns of wildlife use



Patterns of wildlife use