



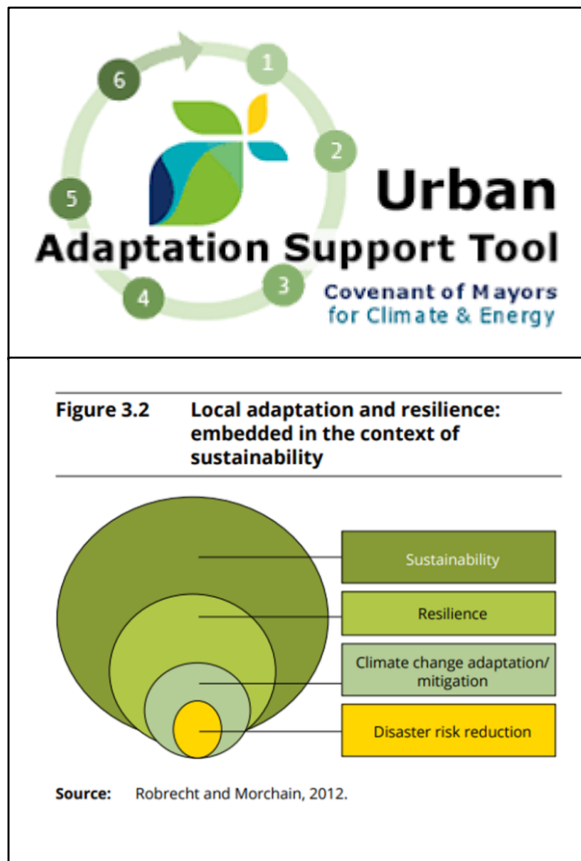
Reykjavíkurborg  
Umhverfis- og skipulagssvið

# Reykjavik City

Þróun Hrafnadóttir



# The adaptation support tool



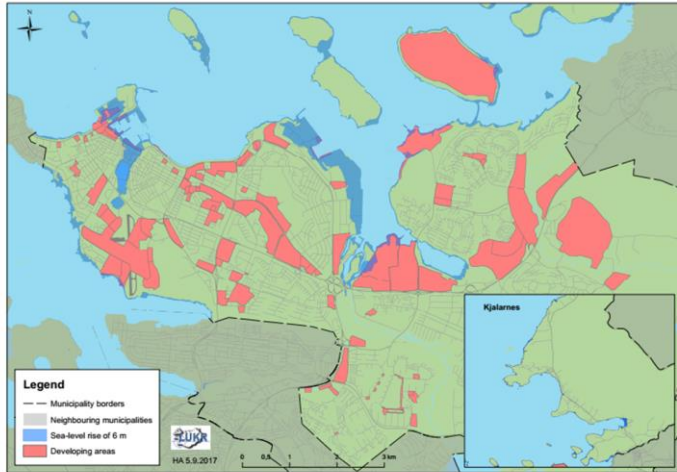
1. Preparing the ground for adaptation
2. Assessing risks and vulnerabilities to climate change
3. Assessing adaptation options
4. Implementation
5. Monitoring and evaluation

Urban adaptation to climate change in Europe 2016. p 34



# Assessing risks and vulnerabilities

## Vulnerable areas in Reykjavik

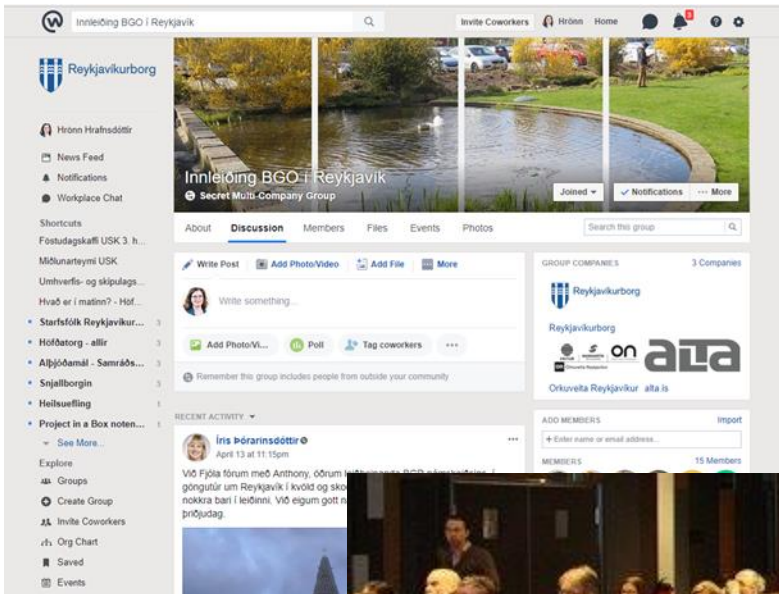


Vulnerable areas in the City of Reykjavik due to estimated 6 meters flooding in 100 year return time.



# Case study: blue green solutions

## @workplace by facebook





Reykjavíkurborg  
Umhverfis- og skipulagssvið

# Reykjavik City

Hrönn Hrafnisdóttir

